

Application for WCF Recognition of new breed

Traditional Longhair Silver and Golden,
Shaded and Tipped varieties





Contents

- Motivation for new breed recognition
- Origin of the Traditional Longhair Silver and Golden varieties
- Breeding rules
- Proposed standard
- Pictures

Motivation for new breed recognition

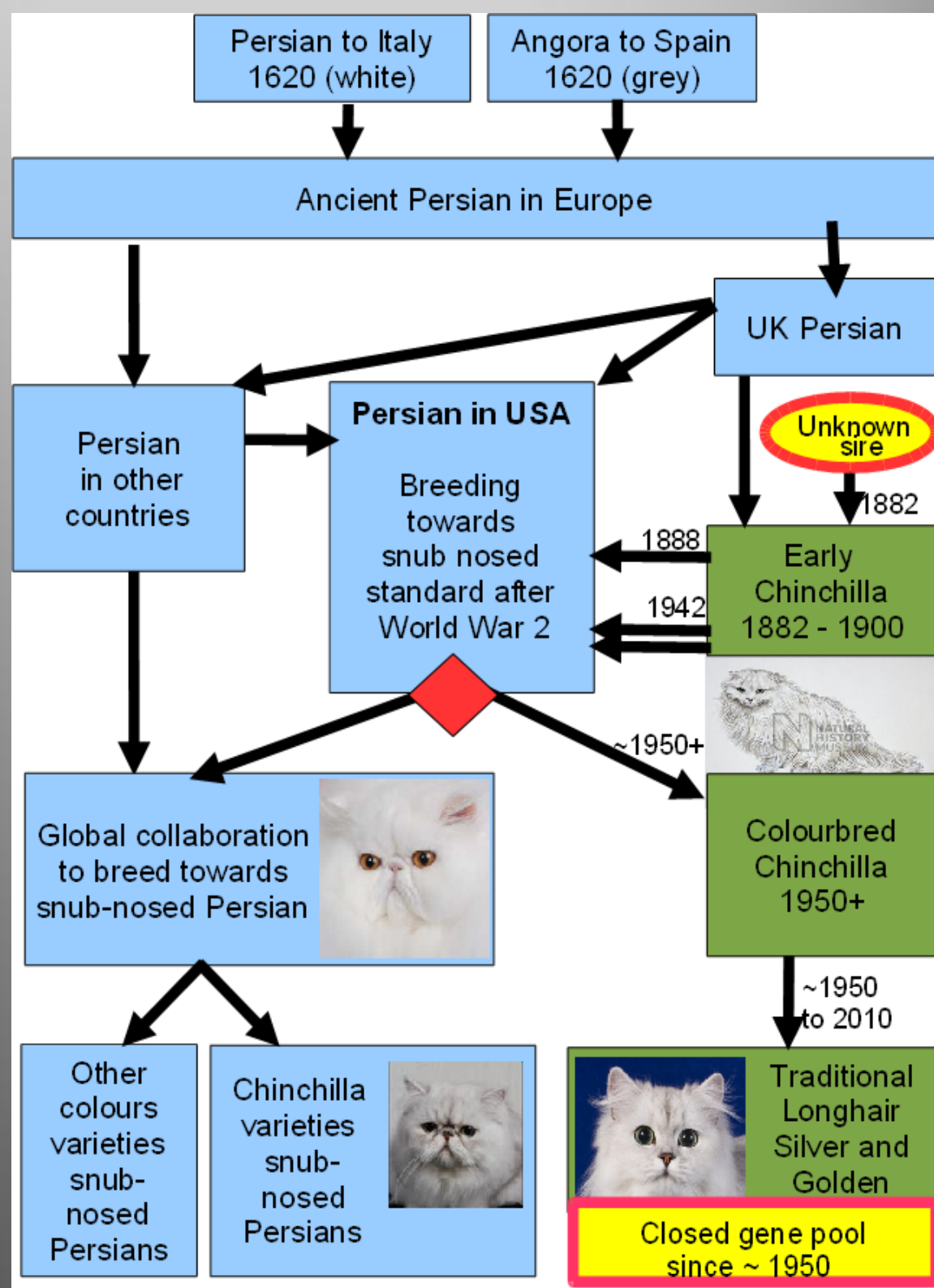
- Historic classification as Persian
- Sub genepool escaped breeding towards the modern Persian standard
 - 60 years of pure colour breeding in Chinchilla
 - Marguerite Ravel (FiFe)
 - Jeanne Ramsdale (USA)
 - Stella Slabber (SA)
- Today they still look like they did 60 years ago



Breed Evolution (or lack thereof)

- The breed evolution chart on the next slide clarifies the
 - history and
 - effect of the closed sub gene pool that conserved the traditional longhair in the
 - Silver and Golden,
 - Shaded and Tipped varieties.

EVOLUTION OF TRADITIONAL LONGHAIR SILVER AND GOLDEN



Attempts to separate the breed

- Some allowances in Persian standard
 - But still judged as Persian
- Sterling : TICA early 1990
 - Jeannie Johnson
 - Interest dwindled after her death
- Chinchilla Longhair : SA Cat Council (1996)
 - Breed is thriving
 - Standard needs revision towards global uniformity

Need for Global Standard

- Breed very popular amongst pet owners
 - Non-tearing eyes : no staining
 - Healthy breathing
 - Well-formed jaws
- Commercial value
 - Breed used by major player in cat food industry for product branding
 - Noticeable demand in TV commercial- and film industries

Genetics

- Body type and head
 - Resemble the longhairs of a century ago
- Smaller than Persian
 - Male is 3,5 - 5,5 kilogram
 - Compare : Persians 5,5 - 8,5 kilogram.
 - Female is 2,5 - 3,5 kilogram
 - Compare : Persians 3,5 - 5,5 kilogram.
- Colour genetics
 - Same as in Persian Chinchilla



2009 Photo by Theresa F

Proposed colours

- This proposal includes colour varieties for
 - Silver and Golden
 - in Black and Blue.
- Reason:
 - Recessive golden and blue occurs from time to time using cats in the current gene pool without out-crossing to recent Persian Chinchillas

Black Golden Shaded, Black Silver Shaded, Black Golden Tipped



Proposed name

- The name “Traditional Longhair” is proposed and not “Sterling” or “Chinchilla Longhair”
- Reasons:
 - The word “Chinchilla” is associated with the Persian breed.
 - “Sterling” implies Silver (not Gold)



© Hanneke Bestbier

Proposed standard: Body

- Medium sized, Medium boned.
 - Semi-cobby body, low on legs
 - Body not coarse
 - Forelegs straight.
- Neck short.
- Paws round, firm and tufted.
- Tail as long as body, carried without a curve and at an angle lower than back.
 - Well furnished.

Proposed standard: Head

- Gently rounded, with a slight muzzle. The face is open.
- The nose is medium in length, broad with slight break in profile. Adequate nose leather and nasal apertures. Nose not snub.
- The jaw is broad with gentle contours giving the impression of a smiling face.
- The chin is broad, firm and well developed.



© Hanneke Bestbier

Proposed standard: Ears & Eyes

- Ears medium, set well apart, round tipped and not unduly open at base.
 - Well tufted inside.
- Eyes large, walnut shaped, set well apart and wide open.
- Eye colour ranges from aqua marine to emerald green.
 - Blue-green to brilliant green.

Proposed standard: Coat

- Dense and long on body, with full ruff and brush.
- From the rear, hind legs should have a trousered appearance.
- Texture fine, soft and silky, glossy in appearance and standing away from body.



Proposed standard: Colour varieties

- Black Silver Shaded, Black Silver Tipped.
- Black Golden Shaded, Black Golden Tipped.
- Blue Silver Shaded, Blue Silver Tipped.
- Blue Golden Shaded, Blue Golden Tipped.



© Hanneke Bestbier

Proposed standard: Colour features

- Eye rims and lips
 - Black or dark brown.
- Nose leather
 - Brick red outlined with black or dark brown.
- Paw pads
 - Pad leather black or dark brown.
 - Pad tufts black, white or pewter.

Proposed standard: Considerations

- Eye colour can take up to 4 years to settle.
- Length of tipping varies from 3% (Tipped) to 45% (Shaded).
 - Tipping of 15% and higher is considered Shaded.
- Tipping appears darker in summer when there is less undercoat.
- Allow for barring in kittens.



© Hanneke Bestbier

Proposed standard : Faults

- Snub nose.
- Tearing eyes.
- Deep defined nose stop.
- Incomplete lip- or nose liner.
- Pink on paw pads.
- Uneven jaws (undershot or overshot).



Proposed standard : Points (100)

| | |
|---------------------------|----|
| Body | 15 |
| Head | 20 |
| Ears | 5 |
| Tail | 5 |
| Eye colour and shape | 15 |
| Coat (length and texture) | 10 |
| Coat colour | 25 |
| Condition | 5 |

Pictures : Body

- Medium sized,
Medium boned.
 - Semi-cobby body,
low on legs
 - Body not coarse
 - Forelegs straight.

Persian



Traditional
Longhair

Pictures :

Nose length and nose break

- The nose is medium in length, broad with slight break in profile.



Traditional
Longhair
medium nose



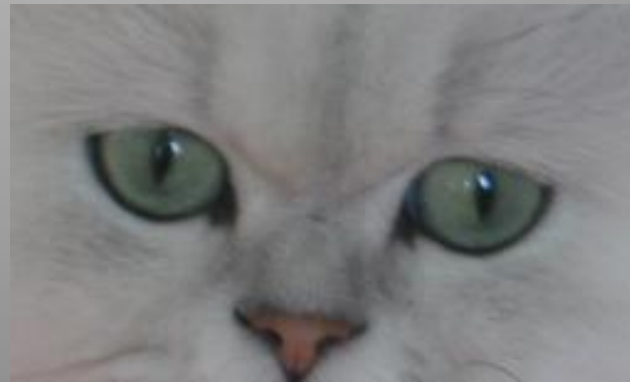
Persian snub nose

Pictures: Eyes

- Large, walnut shaped, set well apart and wide open.



Emerald green
(Brilliant green)



- Walnut
•shaped



Aqua marine
(Blue-green)

Pictures: Coat colours



Possible:

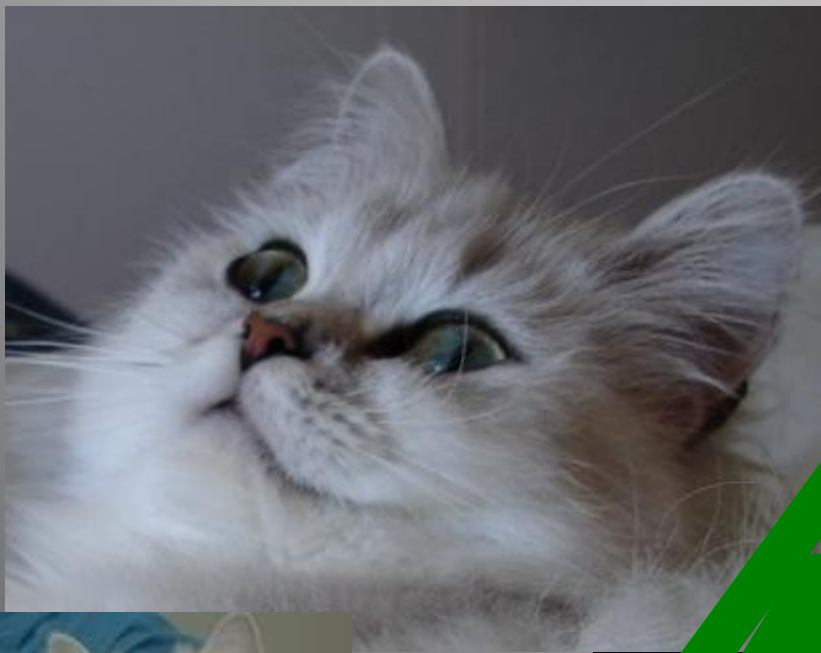
Black Silver Shaded,
Black Silver Tipped.
Black Golden Shaded,
Black Golden Tipped.
Blue Silver Shaded,
Blue Silver Tipped.
Blue Golden Shaded,
Blue Golden Tipped.



Blue Golden



Pictures: Open, smiling face



Traditional Longhair



Persian

Pictures: Medium sized ears

- Ears medium, set well apart, round tipped and not unduly open at base.
 - Well tufted inside.





Alida Delport
Cherie-Finesse Cattery